



Medical Mounting Solutions

12 Inch MF Patient Monitor Arm (DG-013-015W-2)

1. Mounting Plate Load Capacity: ≤ 12 kg
2. Mounting Plate Horizontal Adjustment: $\pm 90^\circ$
3. Mounting Plate Tilt Adjustment: -5° to 30°
4. Base Horizontal Adjustment: $\pm 90^\circ$
5. Product Gross Weight: 2 kg
6. Packaging Dimensions: 400 × 255 × 150 mm

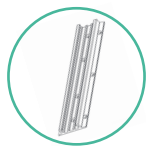
Optional Accessory:



Dual Cable Management Hooks



Universal Basket



14 Inch Channel



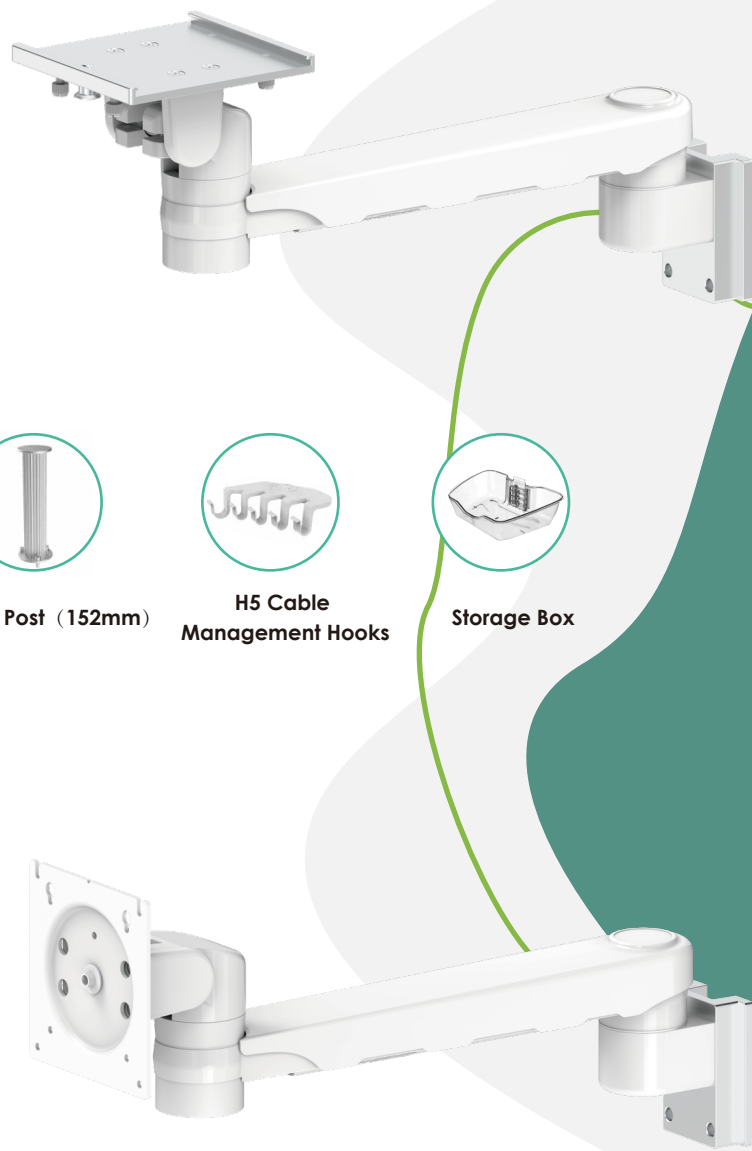
Down Post (152mm)



H5 Cable Management Hooks



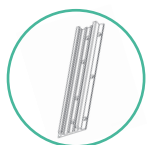
Storage Box



12 Inch MF Monitor Arm (DG-013-019W)

1. Mounting Plate Load Capacity: ≤ 12 kg
2. Mounting Plate Horizontal Adjustment: $\pm 90^\circ$
3. Mounting Plate Tilt Adjustment: -5° to 30°
4. Base Horizontal Adjustment: $\pm 90^\circ$
5. Product Gross Weight: 2 kg
6. Packaging Dimensions: 400 × 255 × 150 mm

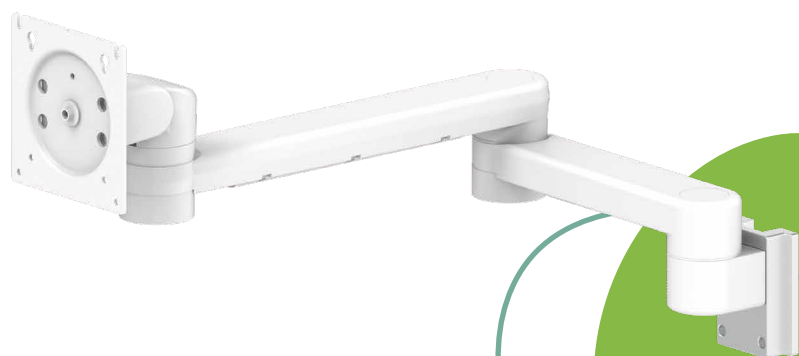
Optional Accessory:



14 Inch Channel



8+12 Inch MF Monitor Arm (DG-013-026W)



MHA Variable Height Patient Monitor Arm

Maximum Load: **5.5-9kg (DG-013-023W)**

Maximum Load: **9-13kg (DG-013-033W)**

1. Mounting Plate Horizontal Adjustment: 360°
2. Mounting Plate Tilt Adjustment: -5° to 30°
3. Height Adjustment Range: 453 mm
4. Arbitrary Positioning Within Travel Range
5. Fully Integrated Cable Management
6. Product Gross Weight: 4.5 kg
7. Packaging Dimensions: 660mm*250mm*140mm

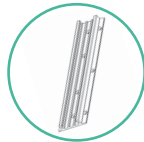
Optional Accessory:



Dual Cable Management Hooks



Universal Basket



14 Inch Channel



H5 Cable Management Hooks



Down Post (152mm)



Storage Box

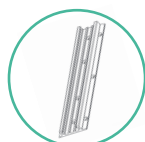
MHA Variable Height Patient Monitor Arm (DG-013-022W)

Maximum Load: **5.5-9kg (DG-013-022W)**

Maximum Load: **9-13kg (DG-013-032W)**

1. Vesa Horizontal Adjustment: 360°
2. Vesa Tilt Adjustment: -5° to 30°
3. VESA Swivel: 360°
4. Height Adjustment Range: 453 mm
5. Arbitrary Positioning Within Travel Range
6. Fully Integrated Cable Management
7. Product Gross Weight: 4.5 kg

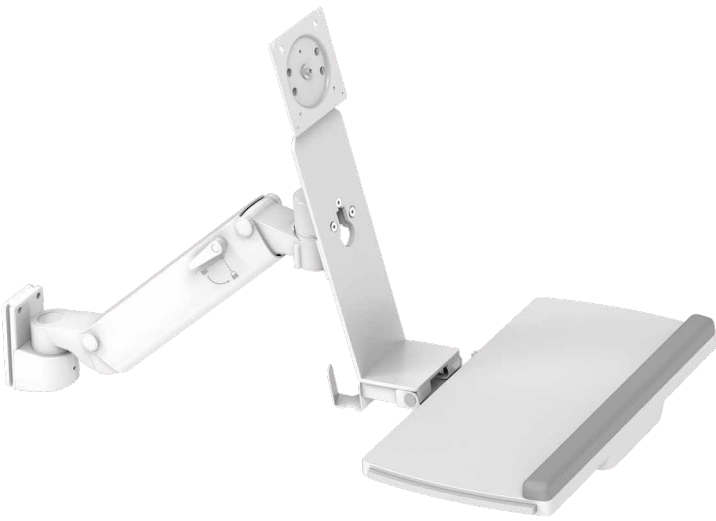
Optional Accessory:



14 Inch Channel



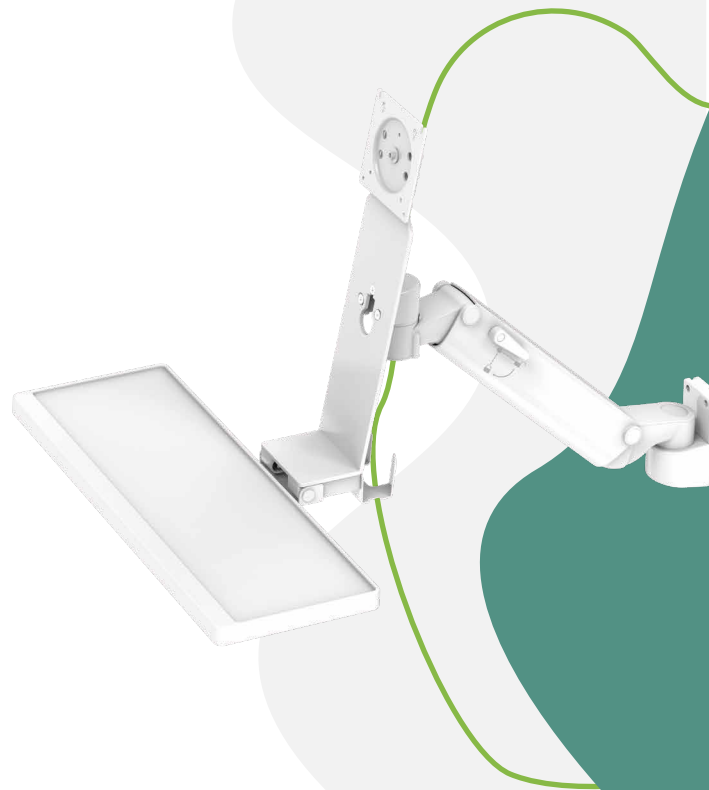
MHA Workstation (DG-013-034W-2)



1. Vesa Horizontal Adjustment: 360°
2. Vesa Tilt Adjustment: -5° to 30°
3. VESA Swivel: 360°
4. Concealed Mouse Tray
5. (Foldable for Storage; Mouse Holder Included)
6. Height Adjustment Range: 453 mm
7. Arbitrary Positioning Within Travel Range
8. Fully Integrated Cable Management
9. Product Gross Weight: 8.5 kg
10. Packaging Dimensions: 660mm*520mm*175mm

MHA Workstation (DG-013-034W)

1. Vesa Horizontal Adjustment: 360°
2. Vesa Tilt Adjustment: -5° to 30°
3. VESA Swivel: 360°
4. Integrated Keyboard Design
5. (Foldable for Storage; Mouse Holder Included)
6. Height Adjustment Range: 453 mm
7. Arbitrary Positioning Within Travel Range
8. Fully Integrated Cable Management
9. Product Gross Weight: 7.5 kg
10. Packaging Dimensions: 660mm*520mm*175mm



Tablet Cart (DG-005-036W)

1. 9-11 Inch Tablet Cradle with anti-theft function
2. Work surface
3. Open Architecture Design
4. Quick-release storage box,
5. Star-H Base, Maximum load \leq 25kg
6. 4-inch Tente medical caster
7. Packaging Dimensions: 660mm*250mm*140mm



PM-L Patient Monitor Cart (DG-005-020W)



1. Fixed Plate, Maximum load $\leq 8\text{kg}$
2. Open Architecture Design
3. Cable management clips
4. Quick-release storage box
5. Star-L Base, Maximum load $\leq 15\text{kg}$
6. 3-inch Tente medical caster

PM-LX Patient Monitor Cart (DG-005-050W-X)



1. Fixed Plate, Maximum load $\leq 10\text{kg}$
2. Open Architecture Design
3. Cable management clips
4. Quick-release storage box
5. Star-H Base, Maximum load $\leq 15\text{kg}$
6. 4-inch Tente medical caster

PM-H Patient Monitor Cart (DG-005-050W-1)



1. Adjustable Plate, Maximum load $\leq 12\text{kg}$
2. Open Architecture Design
3. Cable management clips
4. Quick-release storage box
5. Star-H Base, Maximum load $\leq 25\text{kg}$
6. 4-inch Tente medical caster

ODM-Patient Monitor Cart



EV1000(For Edwards)EDW-005-01W



HemoSphere(For Edwards)EDW-005-02(T)



NC19(For Comen)CMN-004-020



FFR(For Abbott)12711-X-II

ODM - Ultrasound Trolley



Edge II/M-Turbo † (For Sonosite)SON-004-02



HS1 (For Konica)KON-005-001



TR3000(For Chison)CHI-004-01



New

ODM - Endoscopy Cart



Urological(For Vathin)
IEM-004-00



SpyGlass(For Boston Scientific)
BSC-004-002



Laryngoscope(For Karl Storz)
STZ-005-01



TC20(For Philips)
DG-005-022W



TC10(For Philips)
DG-005-026W



Labort Pro(For Trig)
KD-005-01

ODM - ECG/EKG Cart



👤 : Marcus Yap
☎ : +65 96712188
✉ : marcus@akiteck.com.sg



👤 : Marcus Yap
☎ : +86 13424889887
✉ : golfnrelax@hotmail.com



👤 : Jiayi Lau
☎ : +6012-3997421
✉ : Jiayi.lau@akiteck.com.my



👤 : Anex Massom
☎ : +668-1840-0460
✉ : anexmassorn@gmail.com